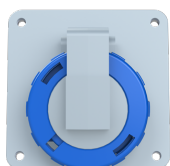


PRODUCT-DETAILS

216RAU6W

Ind. P&S#216RAU6W



General Information

Extended Product Type	216RAU6W
Product ID	2CMA166996R1000
EAN	7392696669962
Catalog Description	Ind. P&S#216RAU6W
Long Description	IEC Receptacle 16A 2P3W 220-240V Clock Position Of Grounding Contact 6 hour Color code Blue

Ordering

E-Number (Sweden)	E2416695
E-Number (Finland)	2421291
E-Number (Norway)	1561902
EAN	7392696669962
Country of Origin	Czech Republic (CZ)
Minimum Order Quantity	1 piece

Dimensions

Product Net Width	95 mm
Product Net Height	102 mm

Product Net Weight	0.23 kg
Mechanical Drawings	9AKK107991A3785

Container Information

Package Level 1 Width	110 mm
Package Level 1 Depth / Length	110 mm
Package Level 1 Height	110 mm
Package Level 1 Gross Weight	0.23 kg
Package Level 1 EAN	7392696005692
Package Level 1 Units	box 1 piece
Package Level 2 Width	800 mm
Package Level 2 Depth / Length	1200 mm
Package Level 2 Height	900 mm
Package Level 2 Gross Weight	116.6 kg
Package Level 2 EAN	7392696071536
Package Level 2 Units	pallet (lift) 420 piece

Environmental

RoHS Status	Following EU Directive 2011/65/EU
-------------	-----------------------------------

Certificates and Declarations (Document Number)

Declaration of Conformity - CE	2CMC700005D0022
Environmental Information	2CMC000056M0000
RoHS Information	2CMC700005D0022
SEMKO Certificate	1613211
REACH Declaration	2CMC700005D0022

Additional Information

Additional Information	2P+E
Ambient Temperature	-25 ... 40 °C
Cable Cross-Section	1.5 ... 4 mm ²
Cable Diameter	6 ... 13 mm
Color	Blue
Connection Type	Screw
Degree of Protection	IP67 IP69
Frequency (f)	50 Hz 60 Hz
Function	Receptacle
Housing Material	Thermoplastic (PBT)

Invoice Description	Ind. P&S#216RAU6W
Mounting Holes	79.5x79.5
Mounting Type	unified flange, angled
Number of Poles	3
Order Multiple	1 piece
Product Main Type	TRAU
Product Name	Panel mounted socket
Protection Type	Watertight
Rated Current (I_n)	16 A
Rated Frequency (f)	50..60 Hz
Rated Voltage (U_r)	200 ... 250 V
Recommended Screw Driver	PH2
Standards	IEC 60309-1, -2
Suitable For	Socket Outlets for Panel Mounting
Suitable for Product Class	IEC Industrial Plugs and Sockets
Instructions and Manuals	2CMC700052M0001
Installation Manual	2CMC700052M0001
RAL Number	RAL 7001 - Silver Grey

Classifications

eClass	27440504
UNSPSC	39120000

Technical

Wire Size	14 ... 12 AWG
Tightening Torque	WireClamp0.8 N·m

Categories

Low Voltage Products and Systems → Industrial Plugs and Sockets → Tough & Safe → Socket Outlets for Panel Mounting

