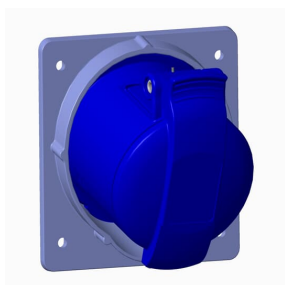

PRODUCT-DETAILS

332RAM9

Socket-outlet, panel mounting, 9h, 32A, IP44, minimized flange, angled, 3P+E



General Information

Extended Product Type	332RAM9
Product ID	2CMA170037R1000
EAN	7392696700375
Catalog Description	Socket-outlet, panel mounting, 9h, 32A, IP44, minimized flange, angled, 3P+E
Long Description	Panel mounted socket, earthing sleeve position 9h, rated current 32A, IP44 splashproof, minimized flange, angled, 3-poles+earth, frequency 50-60 Hz, color code Blue

Ordering

E-Number (Sweden)	2416485
E-Number (Finland)	2416485
E-Number (Norway)	2416485
EAN	7392696700375
Country of Origin	Czech Republic (CZ)
Minimum Order Quantity	10 piece

Dimensions

Product Net Width	94 mm
Product Net Height	100 mm

Product Net Weight	0.22 kg
--------------------	---------

Container Information

Package Level 1 Width	188 mm
Package Level 1 Depth / Length	175 mm
Package Level 1 Height	428 mm
Package Level 1 Gross Weight	2.2 kg
Package Level 1 EAN	7392696702355
Package Level 1 Units	box 10 piece
Package Level 2 Width	800 mm
Package Level 2 Depth / Length	1200 mm
Package Level 2 Height	900 mm
Package Level 2 Gross Weight	548 kg
Package Level 2 EAN	7392696077972
Package Level 2 Units	pallet (lift) 240 piece

Environmental

RoHS Status	Following EU Directive 2011/65/EU
-------------	-----------------------------------

Certificates and Declarations (Document Number)

CB Certificate	2CHC660154X0201
Declaration of Conformity - CE	2CMC700005D0001
Environmental Information	2CMC000056M0000
RoHS Information	2CMC700005D0001
SEMKO Certificate	1614201
REACH Declaration	2CMC700005D0001

Additional Information

Additional Information	3P+E
Ambient Temperature	-25 ... 40 °C
Cable Cross-Section	2.5 ... 10 mm ²
Cable Diameter	13 ... 21.5 mm
Color	Blue
Connection Type	Screw
Degree of Protection	IP44
Frequency (f)	50 Hz 60 Hz
Function	Panel mounted socket
Housing Material	Plastic (PA)

Invoice Description	Ind. P&S#332RAM9
Mounting Holes	75x75
Mounting Type	Minimized angled flange
Number of Poles	4
Order Multiple	10 piece
Product Main Type	ERAM
Product Name	Panel mounted socket
Protection Type	Splashproof
Rated Current (I_n)	32 A
Rated Frequency (f)	50...60 Hz
Rated Voltage (U_r)	200 ... 250 V
Recommended Screw Driver	PH2
Standards	IEC 60309-1, -2
Suitable For	Socket Outlets for Panel Mounting
Suitable for Product Class	IEC Industrial Plugs and Sockets
Instructions and Manuals	2CMC700014C0016
RAL Number	RAL 7001 - Silver Grey

Classifications

eClass	27440504
UNSPSC	39121406

Technical

Wire Size	12 ... 10 AWG
Tightening Torque	WireClamp1.2 N·m

Categories

Low Voltage Products and Systems → Industrial Plugs and Sockets → Easy & Safe → Socket Outlets for Panel Mounting

