

# MFI

## MICROINTERRUPTORES CON TERMINALES FASTON DE 6,3 × 0,8 MM

Micro-interruptor

Contactos: 1 NC + 1 NA (acción rápida)

Conformidad: IEC/EN61058, UL1054

Marcado: CE, UL, CCC, UKCA

**Serie**

**MFI** micro-interruptor

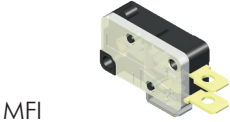
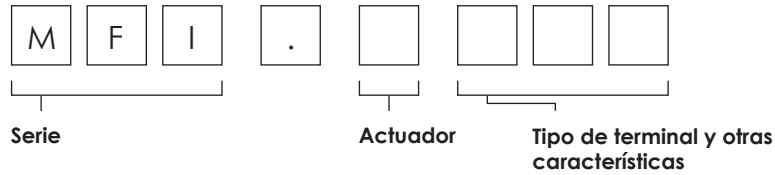
**Actuador**

**blank** émbolo del pasador

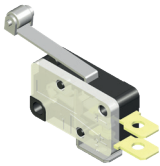
- 1 palanca de rodillo largo
- 2 palanca de rodillo simulada
- 3 palanca de rodillo
- 4 palanca larga
- 5 palanca mediana corta
- 6 palanca
- 7 Palanca de rodillo de 16 mm

**Tipo de terminal y otras características**

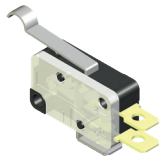
faston en blanco de 6,3 × 0,8 mm



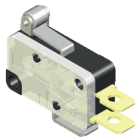
MFI



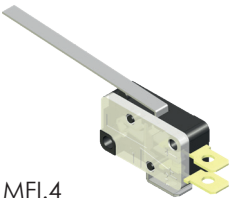
MFI.1



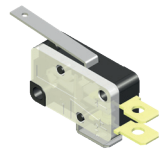
MFI.2



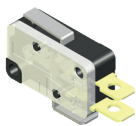
MFI.3



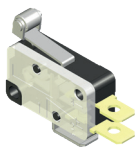
MFI.4



MFI.5



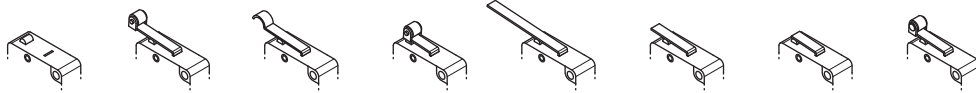
MFI.6



MFI.7

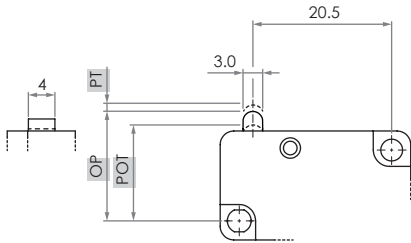
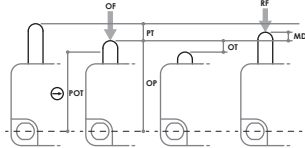
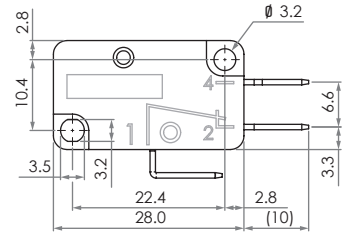
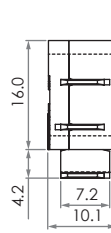
Temperatura de funcionamiento	-25 ... +85°C -13 ... +185°F
Esperanza de vida mínima mecánica eléctrica	1 × 10 <sup>6</sup> ciclos 5 × 10 <sup>5</sup> ciclos
Corriente térmica nominal	I <sub>th</sub> 8 A
Tensión nominal de aislamiento	U <sub>i</sub> 250 V
Tensión nominal soportada a impulsos	U <sub>imp</sub> 1500 V
Corriente nominal de funcionamiento carga resistiva carga inductiva	ie 8 A - 250 V 3 A - 250 V
Grado de contaminación	2
Protección contra descargas eléctricas	clase II

# MFI

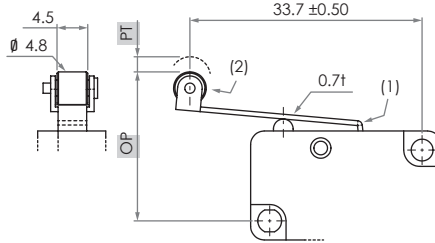


		MFI	MFI.1	MFI.2	MFI.3	MFI.4	MFI.5	MFI.6	MFI.7	
OF	max	5.1	3.2	3.2	5.1	1.3	3.2	5.1	4.5	N
RF	min	1.9	1.0	1.0	1.9	0.15	1.2	1.9	1.9	N
PT	max	1.4	3.3	3.3	1.4	7.6	3.3	1.6	1.8	mm
OT	min	0.8	0.8	0.8	0.6	2.2	0.8	0.6	0.8	mm
MD	max	0.3	0.8	0.8	0.6	2.2	0.8	0.6	0.6	mm
OP		14.4 ±0.5	20.3 ±1.2	18.4 ±1.2	20.3 ±0.8	15.1 ±2.6	15.1 ±1.2	15.1 ±0.6	21.1 ±0.6	mm
POT	⊖	13.4	-	-	19.2	-	-	14.2	19.5	mm

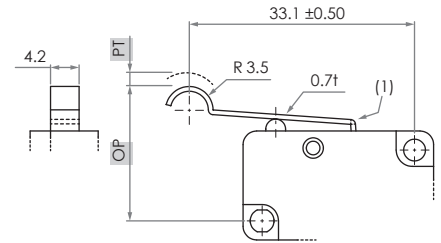
- OF Fuerza operativa
- RF Fuerza de desbloqueo
- PT Pretravel , Pre-desplazamiento
- OT Sobrecarrera
- MD Differential movement
- OP Posición operativa
- POT Recorrido de apertura positiva ⊖



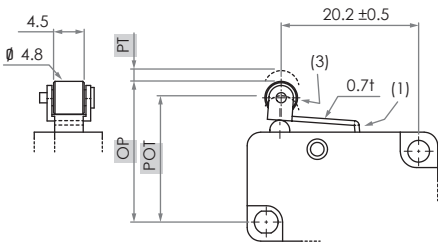
MFI



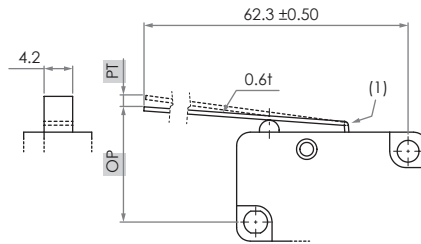
MFI.1



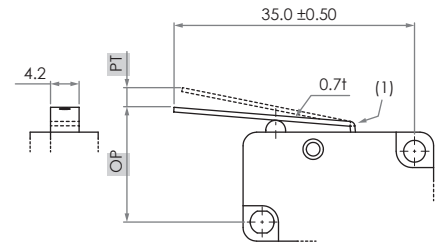
MFI.2



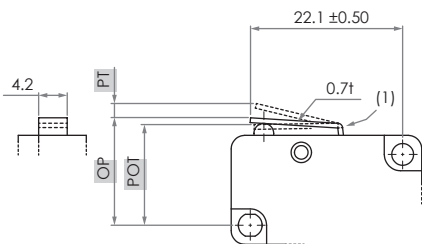
MFI.3



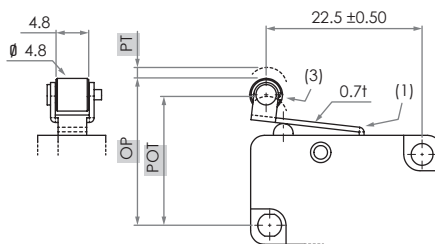
MFI.4



MFI.5



MFI.6



MFI.7

Dimensiones en mm  
Ilustraciones NO a escala

- (1) Palanca de acero inoxidable
- (2) Rodillo de material plástico
- (3) Rodillo de acero inoxidable

